



Seattle Comprehensive Plan Update



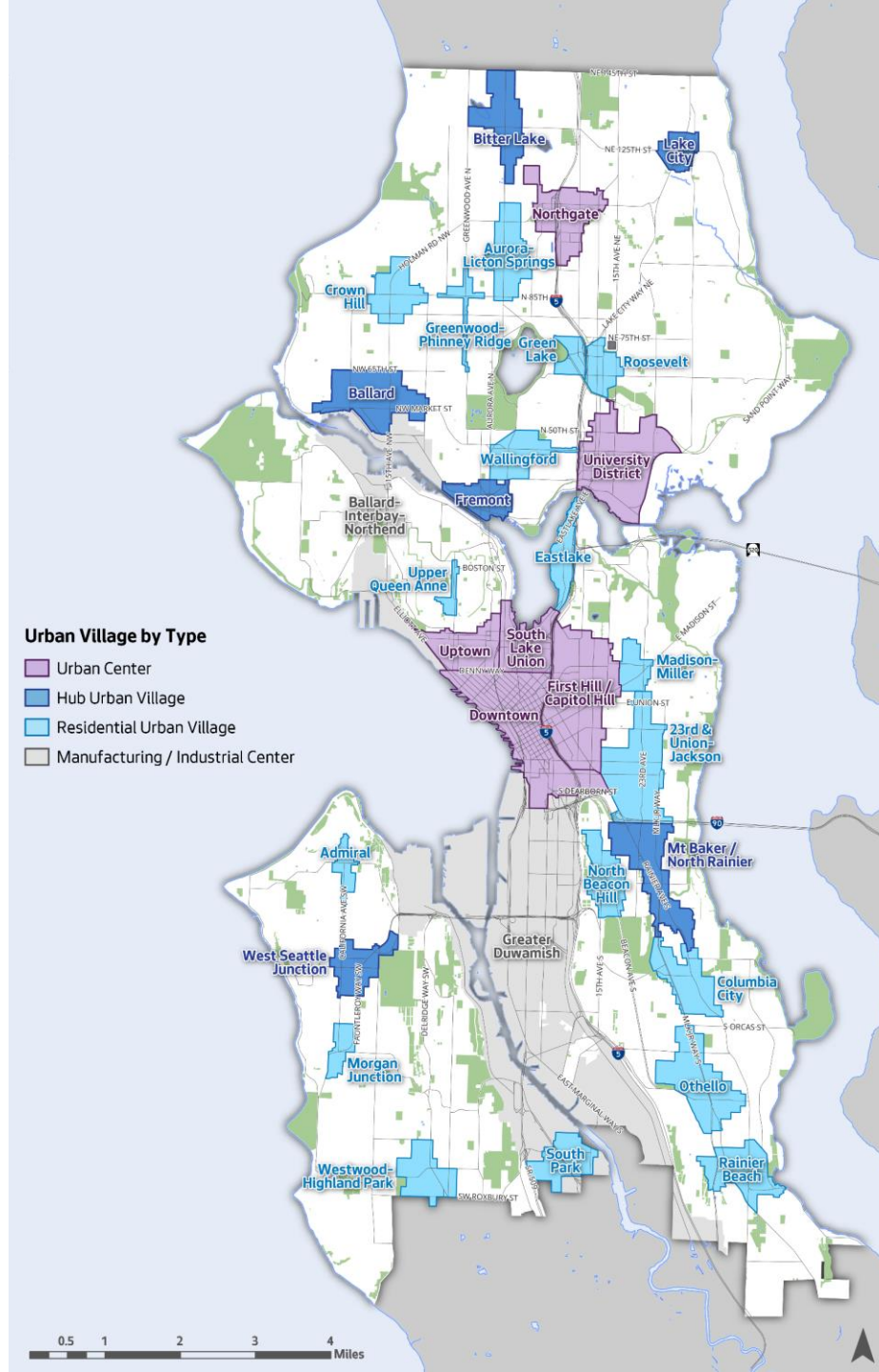
Seattle
Office of Planning &
Community Development

Seattle Comprehensive Plan

- Created for and by Seattle's communities, it helps guide the city's housing and job growth over the next 20 years.
- Updated every 8 years. The current Seattle 2035 Comprehensive Plan was completed in 2016.
- Core values in Seattle 2035
 - Race and social equity
 - Environmental stewardship
 - Community
 - Economic opportunity and security

Strategy for housing and job growth

- Look out to the year 2044, planning for at least:
 - 112,000 housing units
 - 169,500 jobs
- Existing strategy to focus growth and investment within Urban Centers and Villages
- Major update will explore new ideas, including:
 - New centers or villages
 - More options for housing across the city
 - “15-minute” neighborhoods
 - Growth around transit



The Plan Guides Many City Actions



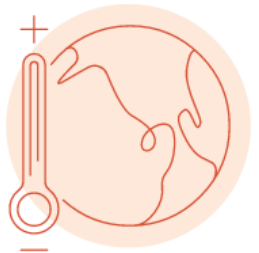
Housing



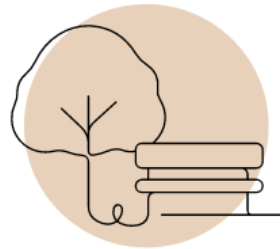
Jobs/Economy



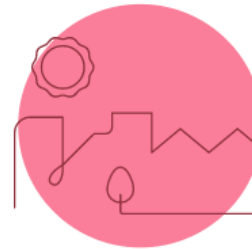
Transportation



Environmental Justice/
Climate Change



Parks/
Open Spaces



Livability



What Makes this Plan Update Different?

- Global pandemic and recovery
- National reckoning with systemic racism
- Climate change and adaptation at the forefront
- Persistent housing crisis and displacement risk
- Seattle's rapid growth is anticipated to continue

Community Engagement Goals

- Citywide and neighborhood level
- Equitable engagement ethos
- Effective communication
 - Meaningful, relevant
 - Plain talk and graphics
 - Multiple channels and platforms (virtual & in-person)
 - Accessible and multi-lingual
- Meaningful engagement
 - Interaction and co-creation
 - Transparency, responsiveness, and accountability



Equitable Community Engagement

Prioritize resources to engage with:

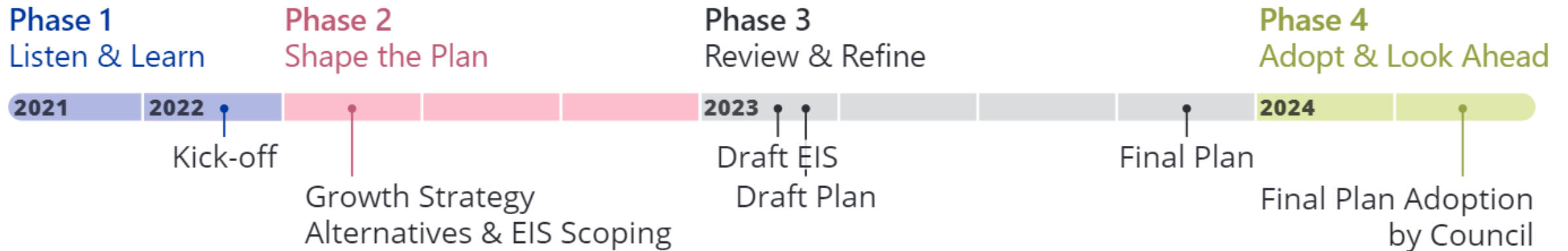
- ✓ BIPOC communities
- ✓ Limited-English populations
- ✓ Youth
- ✓ Renters
- ✓ LGBTQ community
- ✓ People with disabilities
- ✓ Low-income populations
- ✓ People experiencing homelessness

We will also engage with:

- City boards and commissions
- Public agencies
- Cultural organizations
- Policy advocates
- Community-based organizations
- Neighborhood associations
- Business associations
- Small business owners
- Property owners
- Builders and developers
- General public

Project timeline – Engagement phases

Project Timeline



- Introducing the Plan
- Vision for future
- Values and issues
- Equitable outcomes
- Explore options for how city grows
- Policies focus areas
- Equitable growth
- Review and comment on draft Plan (and environmental review)
- What's missing? What can be improved? Equity review.
- Help communities stay engaged